

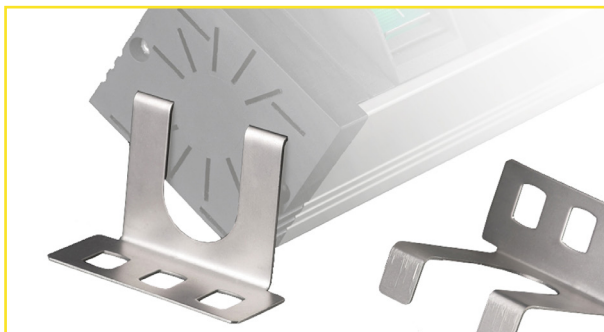


Accs. Power strips



- mounting bracket for socket strips STL
- can be mounted flat or at an angle
- stainless steel
- The STL-WI mounting brackets are ideal for fixed mounting of the STL4, STL6PC and STL9 socket strips. They can be mounted flat or at an angle on or under a desk. Wall mounting is also possible.
- Two brackets are always supplied to match the socket strips.

Order-No.: 720575 - 41-6867
Short-Desc.: STL-WI



Accessories Power strips

Mounting bracket STL-WI

Technical data

dimensions in mm:	see below
colour:	chrome
material:	stainless steel
angle mounting:	can be used for different angle settings of the socket strip

Scope of application

suitable for the following socket strips:

- Art.No. 300130 - 41-7600 -- STL4
- Art.No. 300132 - 41-6744 -- STL6PC
- Art.No. 300131 - 41-6788 -- STL9

desk or wall mounting

Scope of delivery

2x mounting bracket (without screws)

