

YSHIELD® M2L | Two-layer magnetic field shielding foil | Width 21 cm | 1 Meter

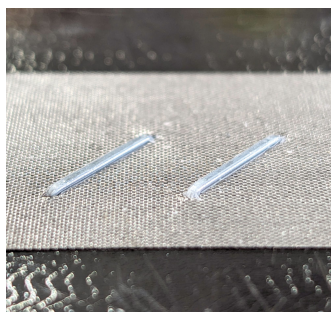
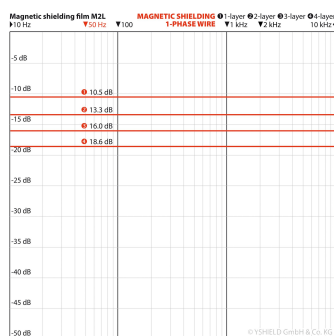
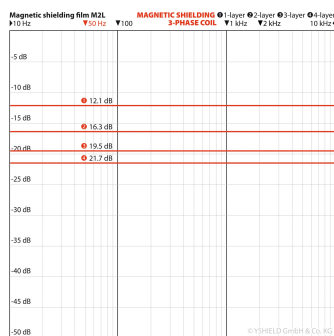
Two-layer shielding foil for magnetic fields. 12-22 dB shielding. Super-thin, low-cost alternative without losses at the smallest bending radii.



YSHIELD® M2L



YSHIELD® M2L



YSHIELD® Grounding of M2L

M2L is a two-layer super-thin magnetic field shielding foil for shielding low-frequency magnetic fields. For this product, we have bonded 2 layers of high-tech magnetic field shielding film and protected them on both sides with laminating film. Highly resistant, suitable as an intermediate layer in roof or floor constructions. For simple shielding by a factor of 4, a single layer is sufficient; for high magnetic flux densities, many layers can be used.

Suitable for small areas in the domestic environment, in electronics, as well as for large areas in construction, trade or industry. The roll length of 100 meters is particularly advantageous on large surfaces for efficient laying. It can also be used in a wide range of applications in cars, electric cars, vans, motorhomes and caravans.

Technical data

- **Width: 21 cm (Shielding surface);** 23 cm (total product)
- **Length: Available by the meter** / Alternatively, 100 meter rolls are also available
- Thickness: 0.12 mm
- **Attenuation magnetic fields (Three-phase 50 Hz): Single-layer 12.1 dB (75.1 %), two-layer 16.3 dB (84.7 %), three-layer 19.5 dB (89.4 %), four-layer 21.7 dB (91.8 %)**
- Attenuation magnetic fields (Single-phase 50 Hz): Single-layer 10.5 dB (70.1 %), two-layer 13.3 dB (78.3 %), three-layer 16.0 dB (84.1 %), four-layer 18.6 dB (88.2 %)
- Shielding magnetic field (static): DC consumers, earth's magnetic field, permanent magnets are only shielded in a relevant manner with very many layers.
- Minimum bending radius: 10 mm
- For reasons of innovation, we do not declare ingredients and magnetic key figures. **The high-tech material has a high initial permeability and high saturation induction from 5 Hz to 100 kHz.**

Processing

Attention: The M6L-series can be cut with high-quality scissors! The cutting edges are as sharp as knives and need to be protected (e.g. with fabric tape) immediately after cutting! Use cut-resistant gloves during processing! We recommend planning the installation of the plates in a way that you do not have to cut them! Pay attention with larger wall spaces that the film is a water vapour barrier.

Application: Choose an adhesive that can bond the PET (polyethylene terephthalate) laminating film. There are high-viscosity mounting adhesives for solid surfaces, for example, or flexible plastic adhesives for bonding under car carpets, for example. Follow the adhesive manufacturer's instructions. Non-absorbent substrates or multiple layers can be problematic because the solvent cannot dry out due to the vapor-tight film. For this reason, we recommend our own adhesive **YSHIELD® PSA**, which forms a self-adhesive layer after application and drying. **Application using a stapler or nailer:** If the substrate is suitable, we recommend using an electric stapler or nailer. For one layer including overlap, a medium-priced electric tacker is sufficient; for two or more layers, you will need a professional nailer. The shielding surface must overlap by at least 2 cm. **Multilayer installation:** Always install the plates in an offset position - the surface is to cover the overlapping underneath.

Grounding

When shielding magnetic fields, also pay attention to the electric fields. Grounding must be carried out to prevent the spread of electric fields. M2L is fully laminated, but there is still a solution for contacting: Stick our **GSX10 / GSX50** grounding tape to all surfaces. Staple or nail through the grounding tape. The **staples or nails make contact with the film and grounding strap**. Further components can be found under "Grounding".

Laboratory & expert report

We have already invested in our **own professional EMV laboratory** years ago. We not only use it to create our laboratory screening reports but also to check each batch daily. Additionally, we have all our products checked by an **independent, well-respected expert**. Double checked for twice the safety. Please find the reports above at the downloads.